



# **INTEGRITY**

**PEARL OF THE SEA**



***MODEL 550CE™ SEAWORTHY COMFORT AND LUXURY***

# ***INTEGRITY***

***PEARL OF THE SEA***



# INTEGRITY

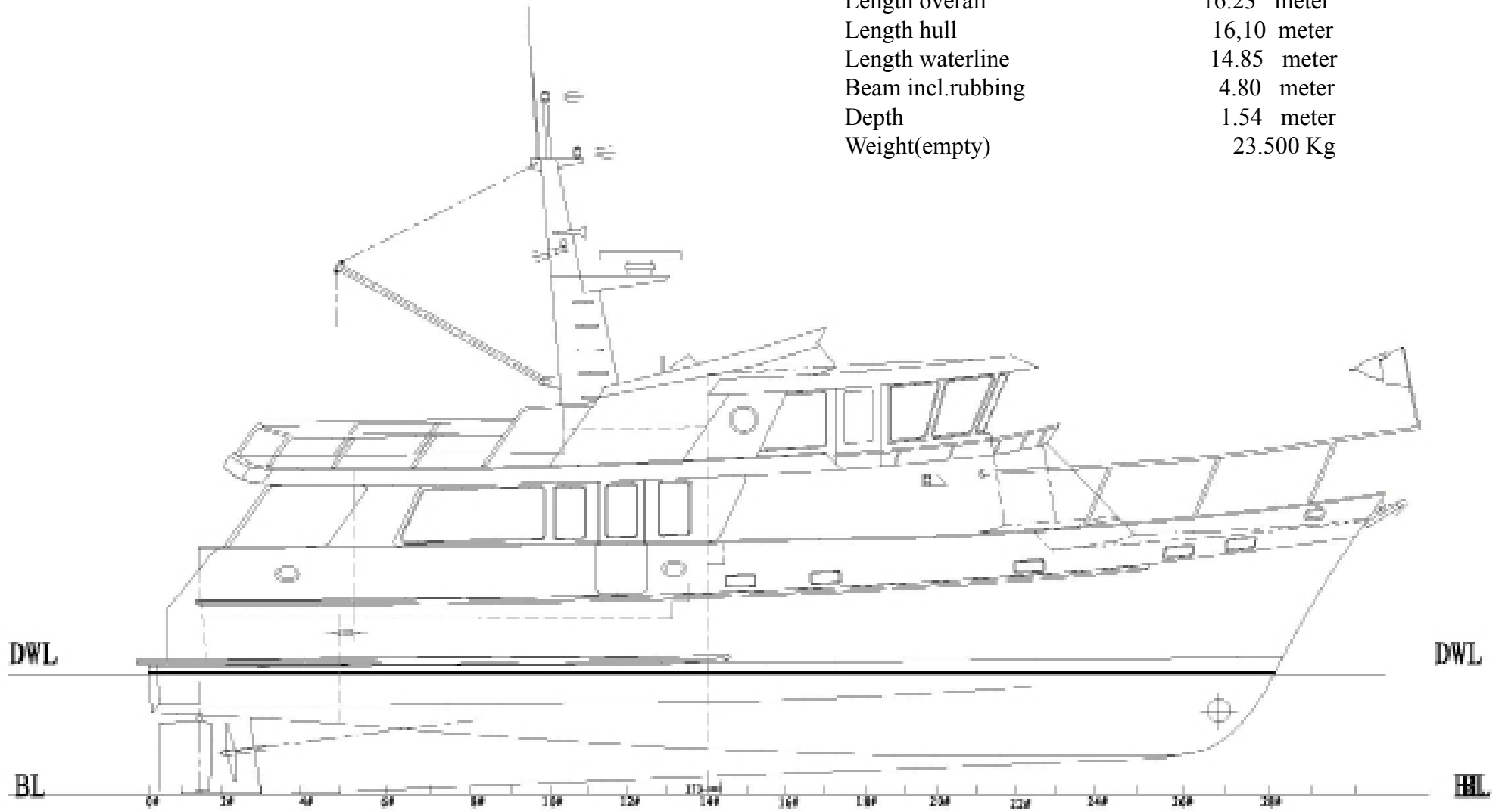
PEARL OF THE SEA



526 CE

**526CE COASTAL EXPRESS**

Length overall	16.23 meter
Length hull	16,10 meter
Length waterline	14.85 meter
Beam incl.rubbing	4.80 meter
Depth	1.54 meter
Weight(empty)	23.500 Kg



## ***SPECIFICATIONS 550CE***

Length overall	16.23 meter
Length hull	14.98 meter
Length waterline	14.85 meter
Height above waterline	7.37 meter
Minimum height	4.40 meter
Beam	4.80 meter
Draft	1.54 meter
Weight	23,5 ton
Fuel	3120 liter
Water	1040 liter
Maximum speed	12 knots
Engine Cummins QSC8.3 , 2600RPM, 540 PK	
Construction; full polyester hull with cored super-structure and 2 vinylester layers.	
<b>* Darkblue hull in gelcoat</b>	

## ***MECHANICAL EQUIPMENT***

3 pcs 12Volt 9000 ltr bilgepumps,float switches  
All seacocks with double s/s hose clamped  
Manifold fuelsystem  
Fueltanks welded alu with sumps,sight gauge and inspection ports  
Manual bolgepump  
Jabsco 12 V pressurized fresh water  
Engineinstruments each control station  
**\*Electronic enginecontrol**  
Engine overheat&low pressure alarms  
Engine room blowers&air intake vents  
Wet exhaust  
PYL stuffing box shaft seal  
Polyester drip pans under engine  
Rudder-fibreglass blades with s/s shafts  
**\* Dual Racor fuelfilters**  
Raritan hotwaterboiler,75 liter  
**\* Maxpower bowthrustrer CT 165 24 V**  
316 s/s prop shaft  
Seastar hydraulic steering system

Watertank welded s/s steel  
Seacocks on all thru hul at or below waterline  
Superiot engineroom sound proofing material  
ZF 280A transmission reduction 2,43:1  
Propellor,4 blades bronze 820x660mm  
**\* Ratchie 5"Compass pilothouse&flybridge**

## ***HARDWARE***

3 windscreen wipers and washer  
4 steps folding s/s swimladder  
**\*Extra s/s ladder SB exit(removable)**  
Alu boom on mast with 12V elektrik winches  
Alu radarmast with deck illumination  
Interior handrail for stairs in s/s brushed  
Halogen ceilinglights 12 V  
Bow & stern staffs  
Step plates in in all hull doors  
Transom hot and cold freh watershower  
Hatch on foredeck  
Elektric horn  
Garelick adjustable helm seat  
Halogen readinglights in all cabins 12V  
Maindeck ceiling lights starboard and aft 12 V  
International navigation lights  
Engineroom and Lazarette with overhead lights  
Railing 1.25 inch s/s steel  
S/s rub rails  
Windows kitchen sliding  
Aft sliding double doors with lock  
Locks on all doors  
Pilothouse doors with clamplocking  
All windows in rubber  
6 Cleats all in s/s steel  
**\* CQR SS anchor, 50 meter 10mm chain**  
**\* Muir 2500 electric anchorwinch 24 V**

## ***ELEKTRIC SYSTEM***

**\* Illumination under the beds and windows**  
Integrated AC/DC voltmeters

Swichpanel with CE appoved fuses with check-lights, switches all with backlights behind doors with glasswindow  
3 pcs 200 A batteries in polyester boxes  
Engine batteries parallel for starting  
**\* Charger Victron 3 fase smart,24 volt**  
Charger/inverter12V Victron Phoenix12/2000.  
Wiring to be color coded&numbered  
Engine hourmeter  
Ship to shore 30A dockside inlet fitting  
**\* Radio/Dvd +stereospeakers in each cabin**  
220V outlets in kitchen and all other area's  
Onan generator 7.5KW 220V AC 50 HZ  
**\* Webasto heating and Eberspracher heating in all cabins(4)**

## ***FLYBRIDGE***

L settee to port with fixed table  
220 Volt AC outlet  
26 inch s/s steering wheel Destroyer  
DC 12 volt outlet  
Non-skid painted deck  
Clear lexan windows  
Storage under seating  
Storafe under sink  
Radarmast with boomwinch and cable electric  
Vinyl cushions with foam@mesh backs  
**\*Canvas cover seating/helmchair/instruments**  
**\*VHF 240(pilothouse)**  
**\* 2e VHF flybridge**  
**\* VHF antenna**  
**\* Glomex TV antenna**

Helm station fwd to starboard  
Hot/cold freshwater sink  
\* **Biminiframe met canvas**

### **DECKS**

Decks to be molded in non skid  
Hatch to lazarette with gas stay and ladder  
Caprails fiberglass painted or gelcoat to the style of the hull color

### **SALOON**

All furniture in teak  
Bar with bottle storage  
H/L table as option  
Hatch access with ladder to engine room  
Headliner of white acoustic vinyl  
Access doors starboard & aft  
Overhead lights in 12 V halogen  
\* **TV, satellite receiver decoder**  
\* **Teak floor and holly sole**

### **PILOTHOUSE**

\* **26 Inch Destroyer teak steering wheel**  
Garelick helm chair  
Console for electronics  
L shape dinette converts to berth  
Chart storage

### **GALLEY**

12 Volt halogen overhead  
Exhaust blower  
Drawers and cabinets

### \* **Fridge drawer**

Fridge 12V/220AC with separate freezer  
Trash cabinet  
Electric 3 burner cooking  
\* **microwave/steam oven**  
S/s double sink with cover @ single lever faucet  
Teak galley unit  
Teak floor holly sole  
White formica top

### **MASTER STATEROOM**

Bed 150x200cm with drawers underneath  
Wardrobe cedar lined with auto light  
Halogen overhead lights and reading lights  
Headliner of white acoustic vinyl  
Mirror  
Teak furniture and bulkheads  
\* **Radio/DVD player**  
\* **Teak floor with holly sole**  
\* **Escape hatch to pilothouse**

### **GUESTCABIN FORWARD**

Bed queensize with drawers underneath  
Wardrobe cedar lined with auto light  
Halogen headlights and reading lights  
Headliner of white acoustic vinyl  
Teak furniture and bulkheads  
Teak floor with holly sole

### **2ND GUESTCABIN**

2 single beds above each other queen size  
Wardrobe cedar lined with auto light  
Halogen headlights and reading lights  
Headliner of white acoustic vinyl  
Teak furniture and bulkheads

### **HEADS**

246 liter holding tank with Y valve with macerator  
Jabsco pump, deck discharge outlet, remote display in head.  
220 V outlets covered  
Exhaust blower  
Separate shower with glass door  
Automatic drainage system  
Single lever shower & sink H&C water faucets  
Halogen ceiling lights  
Jabsco designer electric toilets  
Closets  
Mirror  
White FRP walls  
Sink in white formica

### **MICELLANEOUS**

Hull reinforcements pads for active fin stabilizers  
Emergency tiller  
Teak trim, min. 5 coats of varnish  
Antifouling bottom paint  
Owners manual  
All drawers lock type

CE-categorie-B

**INTEGRITY**  
PEARL OF THE SEA

## OPTIONS

AGM batteries (9 pcs) 200 A  
Corian finish in kitchen ,heads and showers  
Cruisair aircro  
Deckwashpump fresh water  
Deckwashpump saltwater at anchor  
Upgrade to 13.5 Kw Onan generator  
Sharp LCD TV 38 cm in, master bedroom  
Leather upholstery in saloon/pilothouse  
Maxpower CT 165 24 V sternthrustrer  
Naiad stabilizers type 174  
Oil changingsystem

Raymarine elektronik  
2xE120 plotters  
4KW open radar  
Raystar 125 GPS antenna  
TV antenna 45STV  
Depthsounder DSM 300  
Cam 100 camera reardeck  
Cam 50 camera engineeroom  
Autopilot ST 8002 pilothouse  
Autopilot ST 6002 Flybridge  
SPC-30 pilotdrive

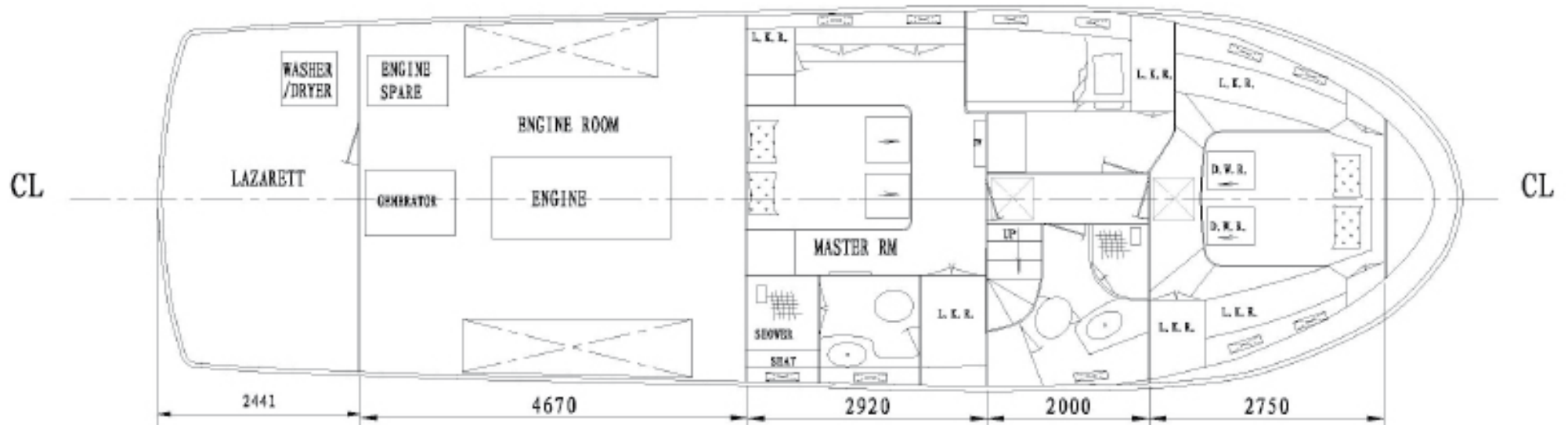
Teak decks  
Teakrailling not varnished  
Washingmachine Indesit /dryer  
Dishwasher Siemens  
Yanmar wingengine 54 PK  
Extra fridge/flybridge



**INTEGRITY**  
PEARL OF THE SEA

# **INTEGRITY**

PEARL OF THE SEA

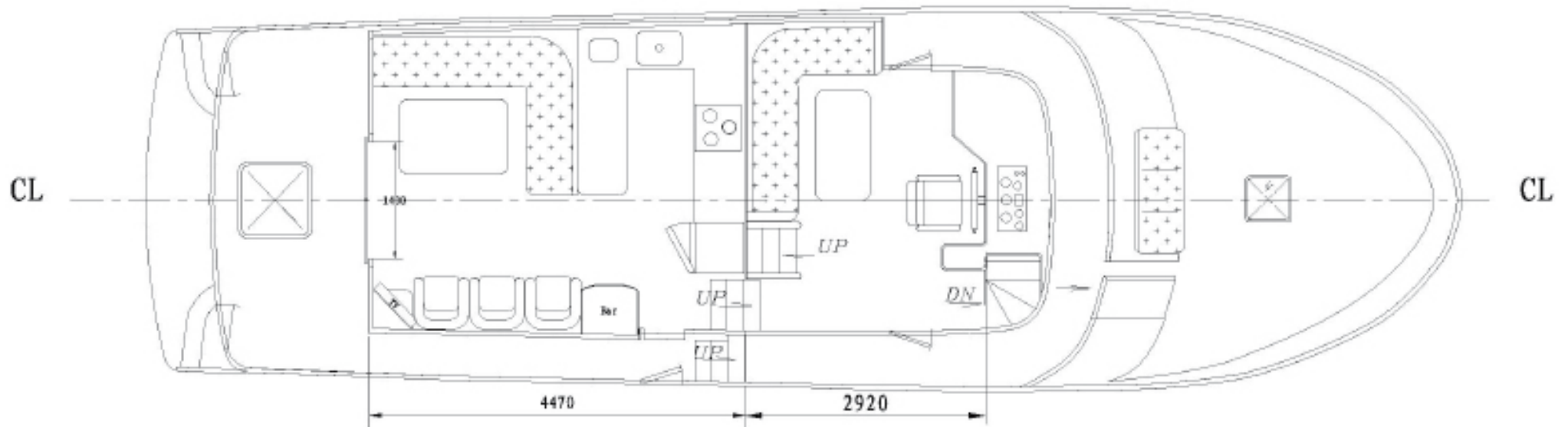


*layout 550CE cabins/engine-room*



# **INTEGRITY**

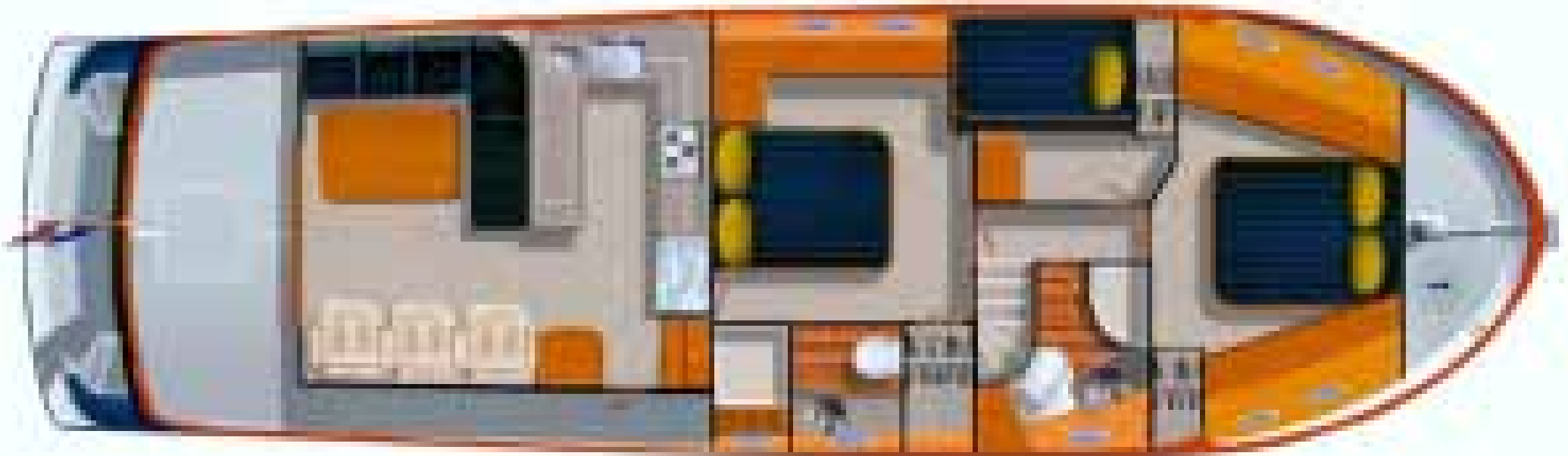
PEARL OF THE SEA



***Layout 550CE Saloon/pilothouse***

# **INTEGRITY**

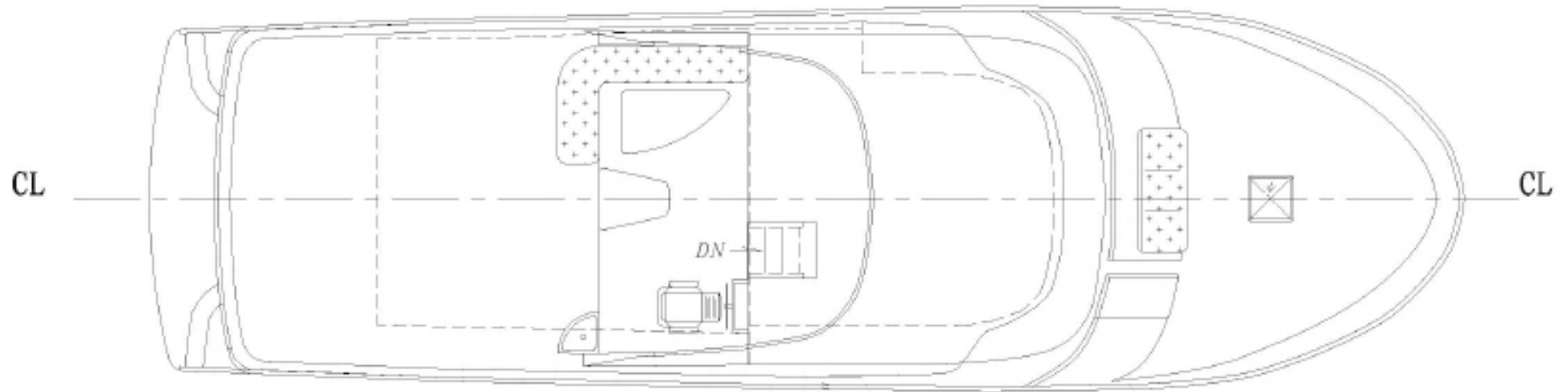
PEARL OF THE SEA



*Layout 550CE Saloon and cabins*

# **INTEGRITY**

**PEARL OF THE SEA**



***Layout 550CE Flybridge***

# **INTEGRITY**

PEARL OF THE SEA



*Layout 550CE Flybridge/  
pilothouse*





*Flybridge*

**INTEGRITY**  
PEARL OF THE SEA



*Flybridge*

**INTEGRITY**  
PEARL OF THE SEA



*Pilothouse*

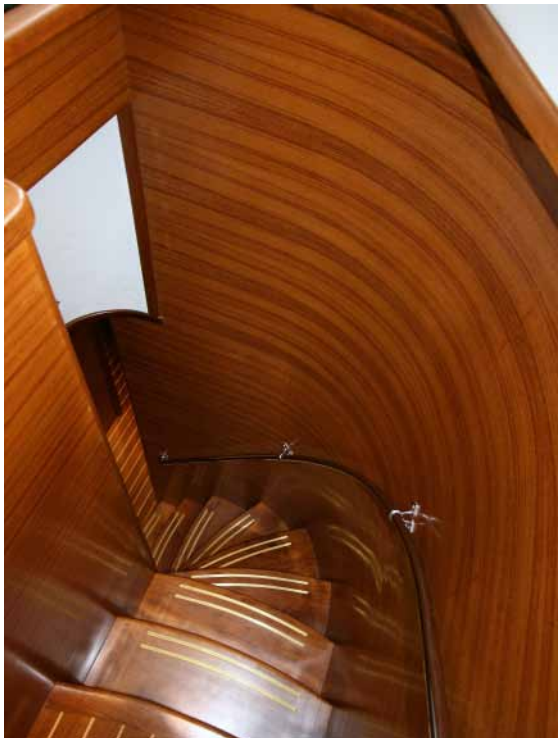
**INTEGRITY**  
PEARL OF THE SEA





*Saloon*

**INTEGRITY**  
PEARL OF THE SEA







## *Options 550 CE*

**Batteries ( 9 pieces)**

**Airco,cruisair**

**Railingcloth flybridge**

**Corian,kitchen,heads**

**Deckwash,salt &fresh**

**Generator upgrade 13.5Kw**

**Sternthruster Maxpower,CT-165**

**Isotherm fridge flybridge**

**Leather sofa's saloon/pilothouse**

**Wingengine Yanmar 4JH4AE**

**Stabilizers Naiad 174**

**Teakdecks**

**Teakrailing**

**Dishwasher Siemens**

**Washing machine Indesit**

**Raymarine 2x E120 navigation**

**Raymarine depthsounder DSM300**

**Raymarine camera 2x**

**Raymarine radar 4KW**

**Raymarine autopilotST8002**

**Raymarine flybridge autopilot ST6002**

**Raymarine ST45 satelite TV**

**Raymarine GPS antenna**

**TV master bedroom**

**Oil changing pump**

**\* See also extra options in red printed**

[www.integritytrawlers.nl](http://www.integritytrawlers.nl)